

# WHAT

# IS



# D A D D Y



# ?



## WORKSHEET 1

# WHAT IS DAIRY?



Have you ever wondered where the milk you pour on your breakfast cereal comes from?

You might already know that it comes from cows, but how does it get from the farm to your bowl? Below we've included the journey that your milk will make.



Can you cut out the pictures and work out where to place or stick them on the journey line below?

**\*If you have a milk allergy and cannot have dairy, alternatives are available. Just make sure any alternatives you do choose are low in sugar and high in protein!**

**START  
HERE!**

**THE FARMER TAKES THE COWS  
TO THE MILKING SHED**

**MILKING MACHINES ARE  
FITTED TO THE COWS UDDERS**

**THE MILK IS COLLECTED  
FROM A FARM IN A TANKER**

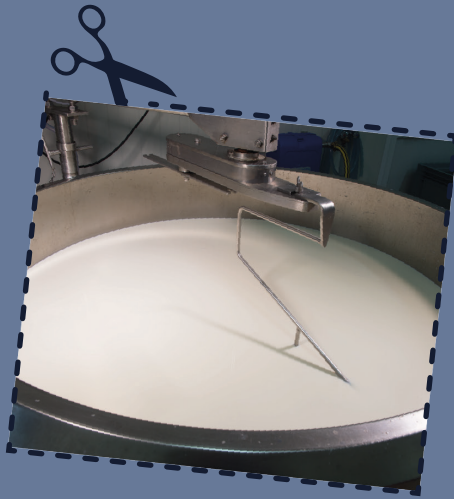
**COWS ARE MILKED 2-3  
TIMES A DAY**

**AT THE DAIRY, THE MILK IS  
MADE SAFE TO DRINK**

**THE MILK IS PUT INTO BOTTLES  
AND CARTONS READY TO BE SOLD**

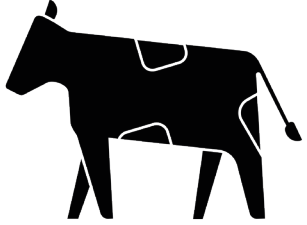
**FINISH!**

# CUT THE PICTURES OUT TO PLAY!



## WORKSHEET 2

# ALL ABOUT COWS



Did you know another word for cows and bulls is cattle and that cows are female cattle and bulls are male? There are also more than 250 breeds of cattle in the world. Some cattle are used to produce beef and some are used for milk.



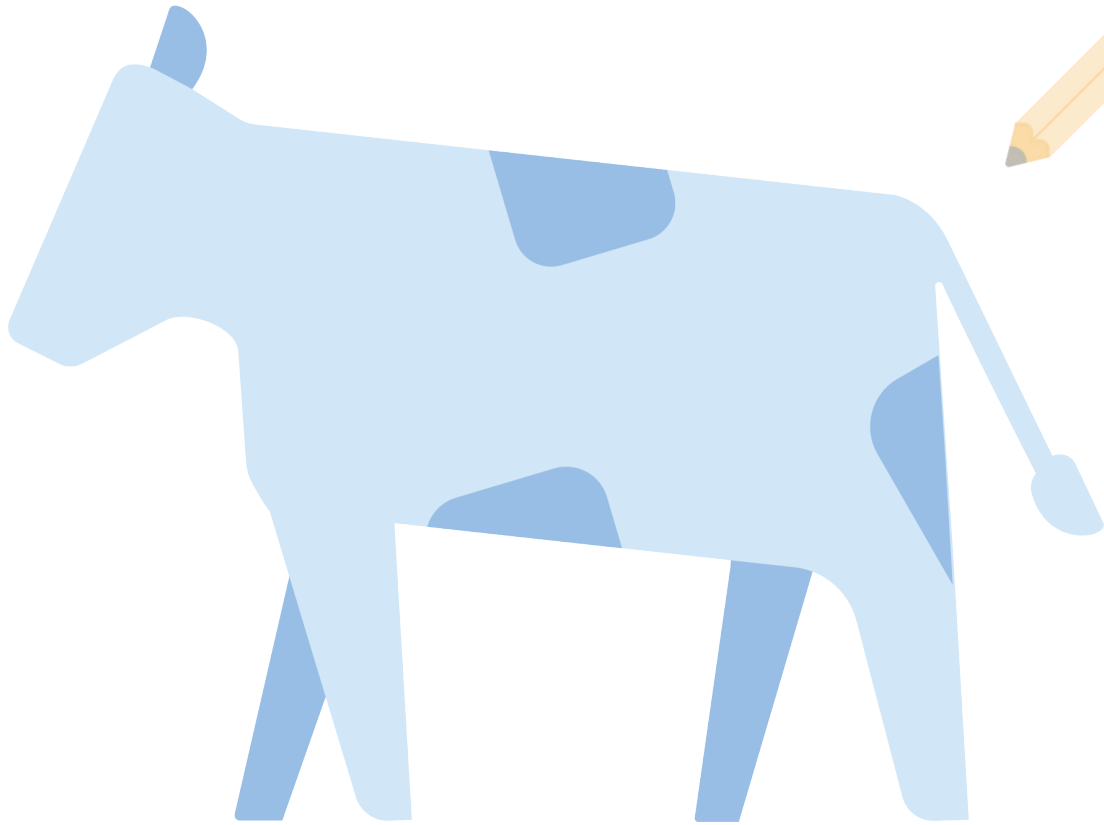
The Holstein Friesian is the most popular in the United Kingdom because it produces more milk than any other cow.

But do you know your way around a cow? Try to label the different body parts on the drawing of the cow below.



# MATCH THE BODY PARTS!

DRAW A LINE FROM THE WORDS TO MATCH THEM WITH THE CORRECT BODY PARTS!



**EARS**

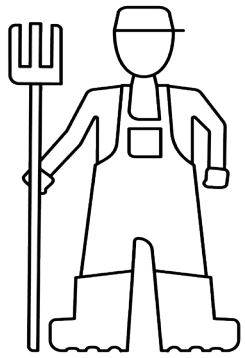
**UDDERS**

**EYES**

**TEAT**

**TAIL**

**HOOVES**



## WORKSHEET 3

# FINDING DAIRY

Dairy farms have a responsibility to make sure that they take measures to be friendly to the environment.

These include things like choosing renewable energy when possible and looking after habitats for wildlife

The 15 words below are all connected with dairy farms and the environment. How many of them can you find? Words can run from side to side, up and down or diagonally. Good luck!

# SOLVE THE WORDSEARCH!

CAN YOU FIND THE HIDDEN WORDS?



V W U T A E Y Q Z U I Y R I A D F  
B I O D I V E R S I T Y L I E I R  
X U L S F A R M E R X E E T V M W  
P R O T E C T R N F I E C F C N I  
I Z O D L B R V P K I S I Y K R U  
F T I B P M X T D F Z N R O L R F  
E F I L D L I W P E F T A E I N N  
G I M E T S Y S O C E T T T M N P  
B E E S I I O Y L Z C V D D U M D  
P E N V I R O N M E N T E R C R A  
G W W R N K L E M E B U T P N I E  
Q N E J A D I S D C E S S E P A I  
H O L S T E I N F R I E S I A N W  
U R W O D A E M W E V I H E E B O  
L D N G B T N M U S A S R Y E B C  
I T D U J P T R A C T O R I C K P



**BEEES**  
**ENVIRONMENT**  
**BIODIVERSITY**  
**ECOSYSTEM**  
**WILDLIFE**

**MILK**  
**BEEHIVE**  
**NATURE**  
**FARMER**  
**PROTECT**

**MEADOW**  
**DAIRY**  
**TRACTOR**  
**HOLSTEIN**  
**FRIESIAN**